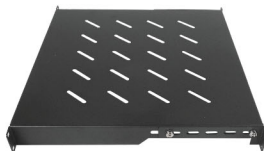


**Product Description**

Product Type	Fixed Shelf
Product ID	FS60
Compatible with	IR Series Depth 600mm WIR Series Depth 550~700mm WIP Series Depth 550~700mm
Weight	± 2,7 kg
Dimension (DxWxH)	400 x 440 x 44 mm
Complete Set with	• 4 set Cagenuts & Screws



**Product Drawing**

